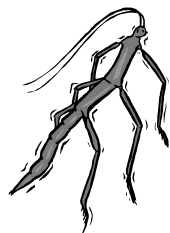
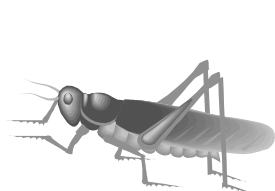
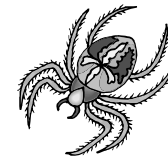


My book about minibeasts' bodies



By



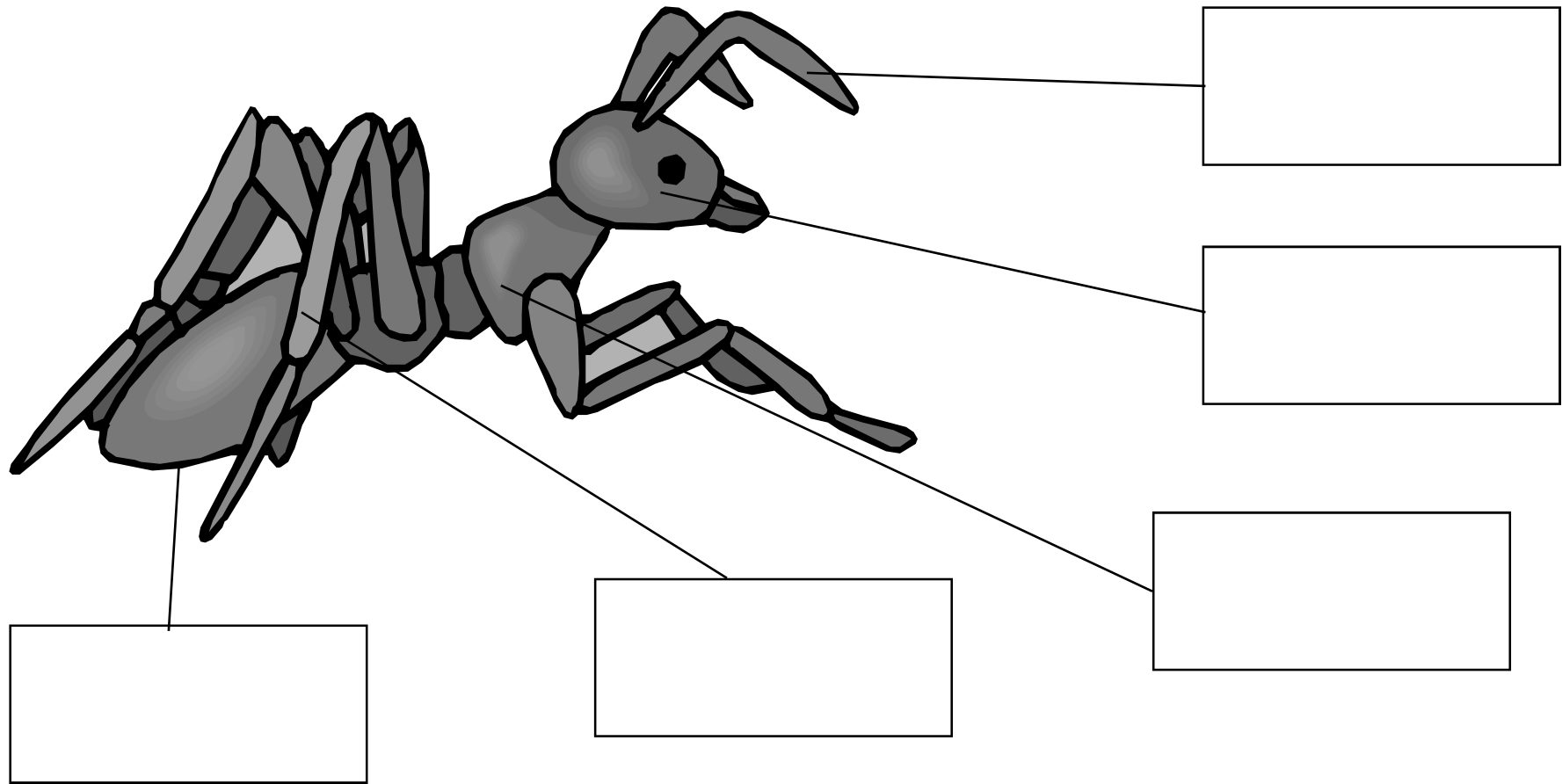
abdomen

antenna

leg

head

thorax



antenna

4 wings

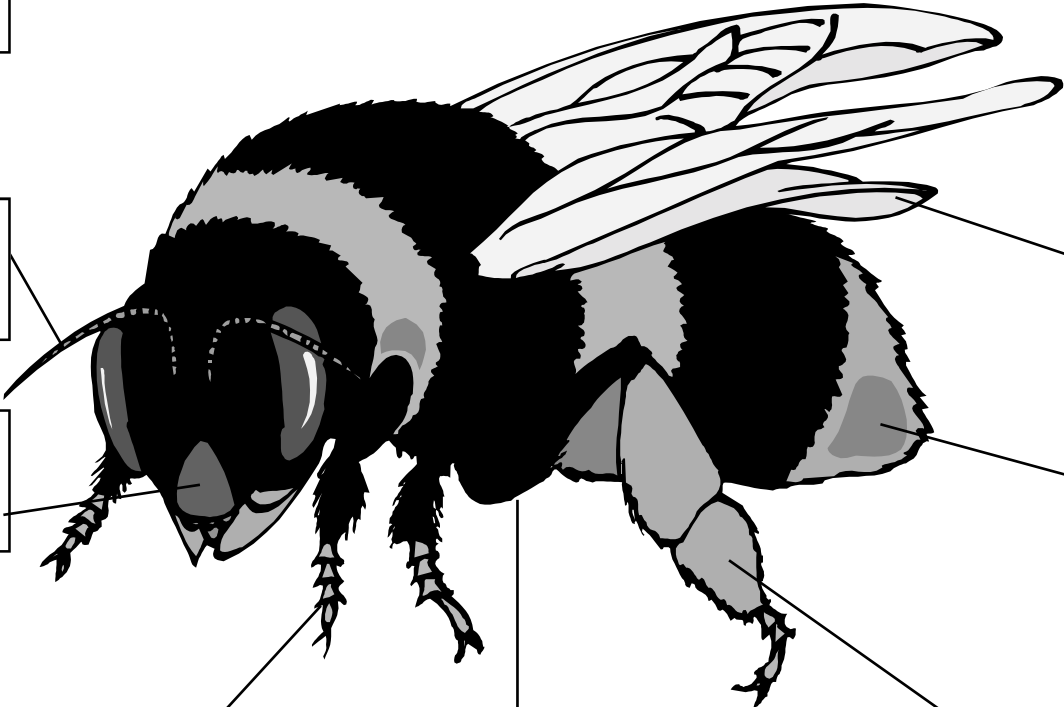
leg

head

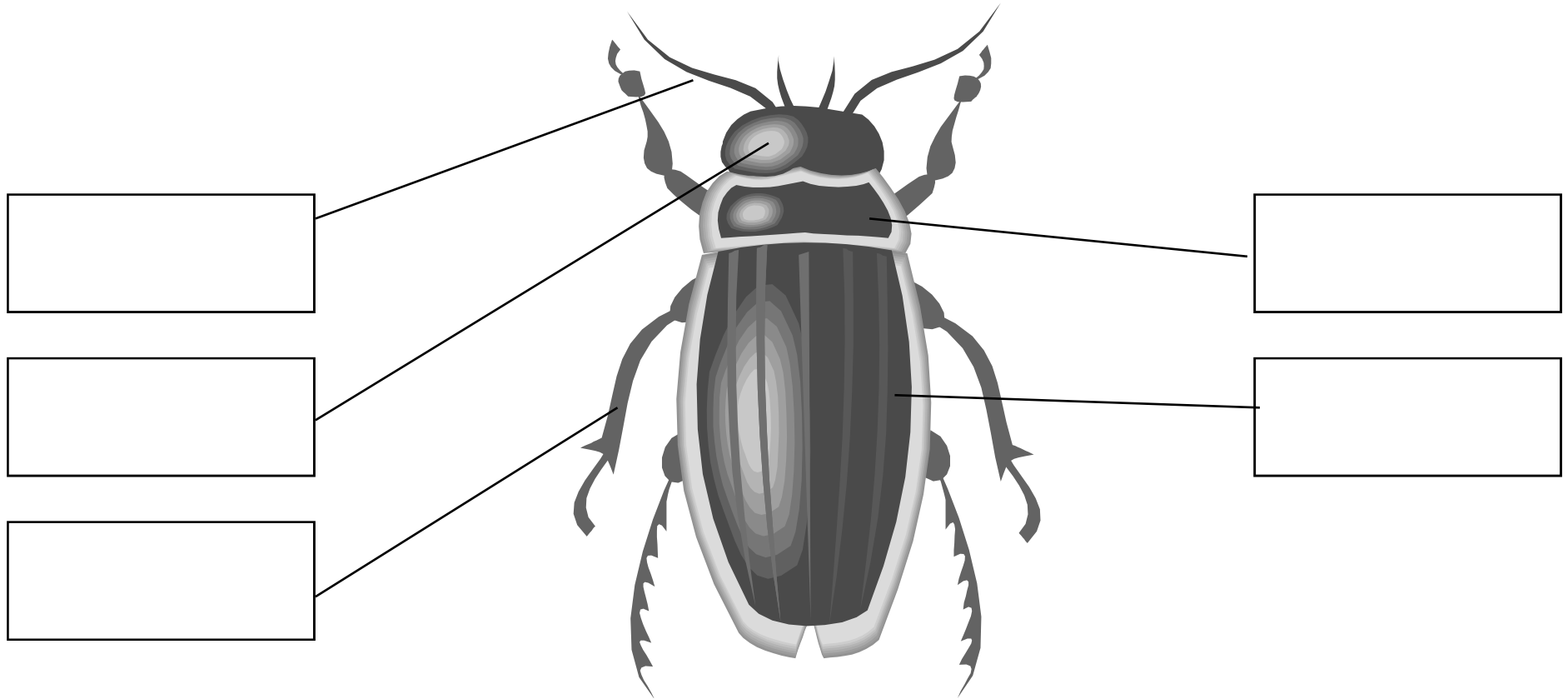
thorax

abdomen

pollen basket



wing case legs head thorax antenna



Two of the wings have turned into hard, opaque wing cases. They protect the transparent flying wings, which are inside the wing cases. When the beetle flies, the wing cases are lifted up so the beetle can fly. You cannot see the abdomen in this picture because the wing cases are covering it.

wing

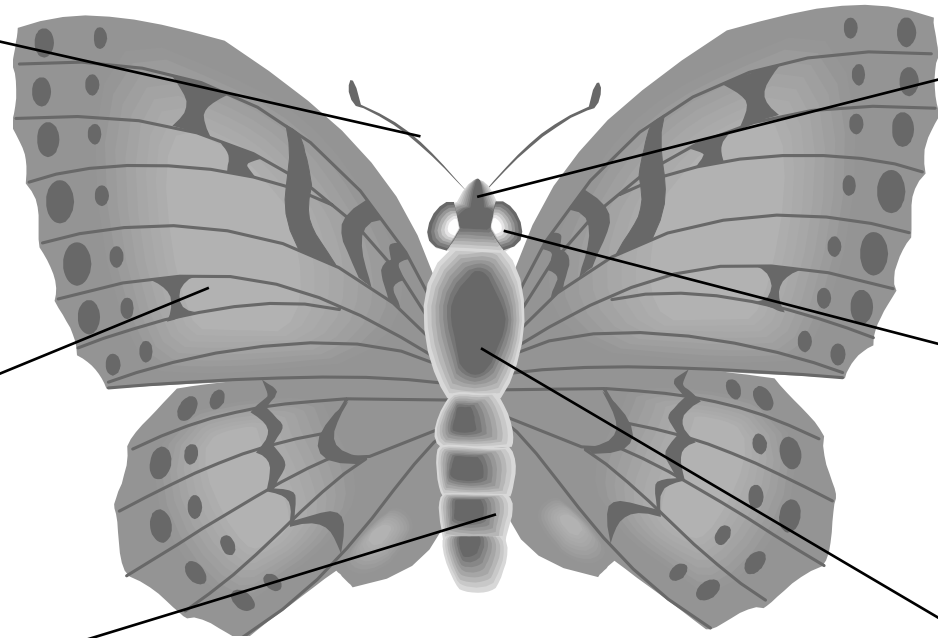
head

eye

antenna

thorax

abdomen



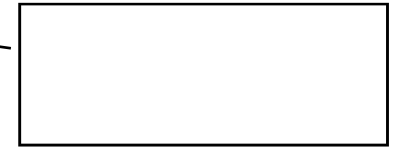
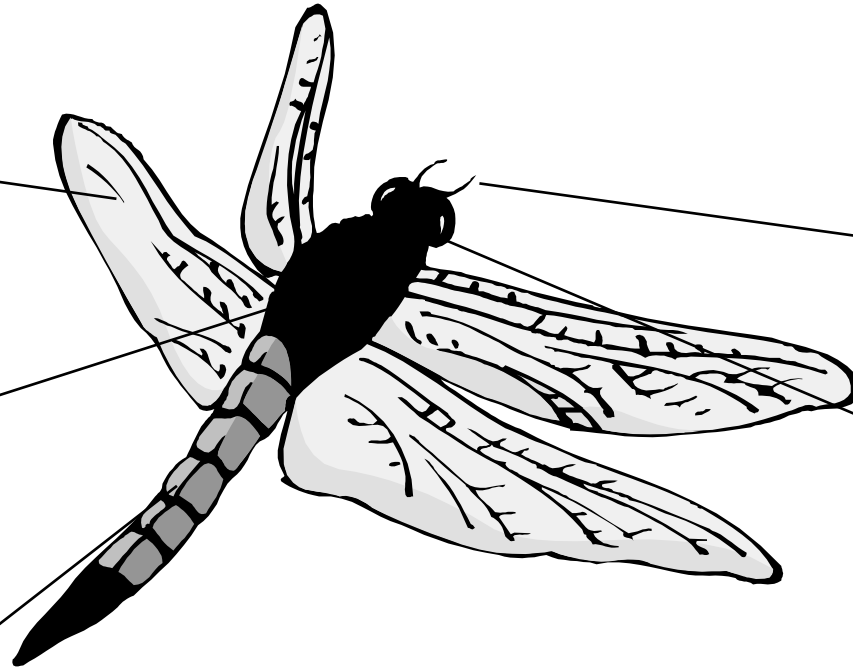
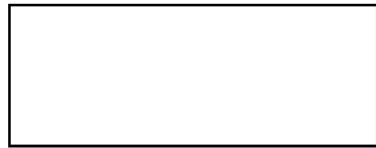
wing

antenna

head

thorax

abdomen



sharp legs to catch prey

antenna

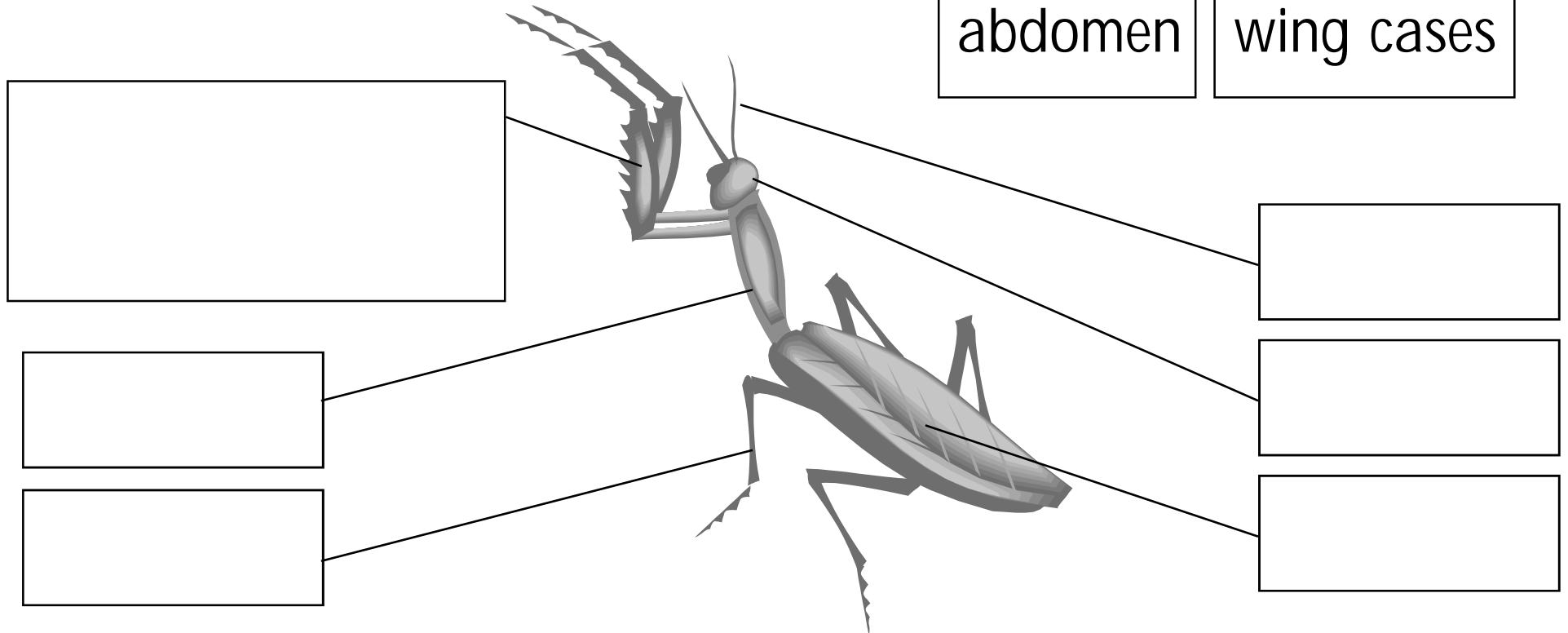
thorax

head

leg

abdomen

wing cases



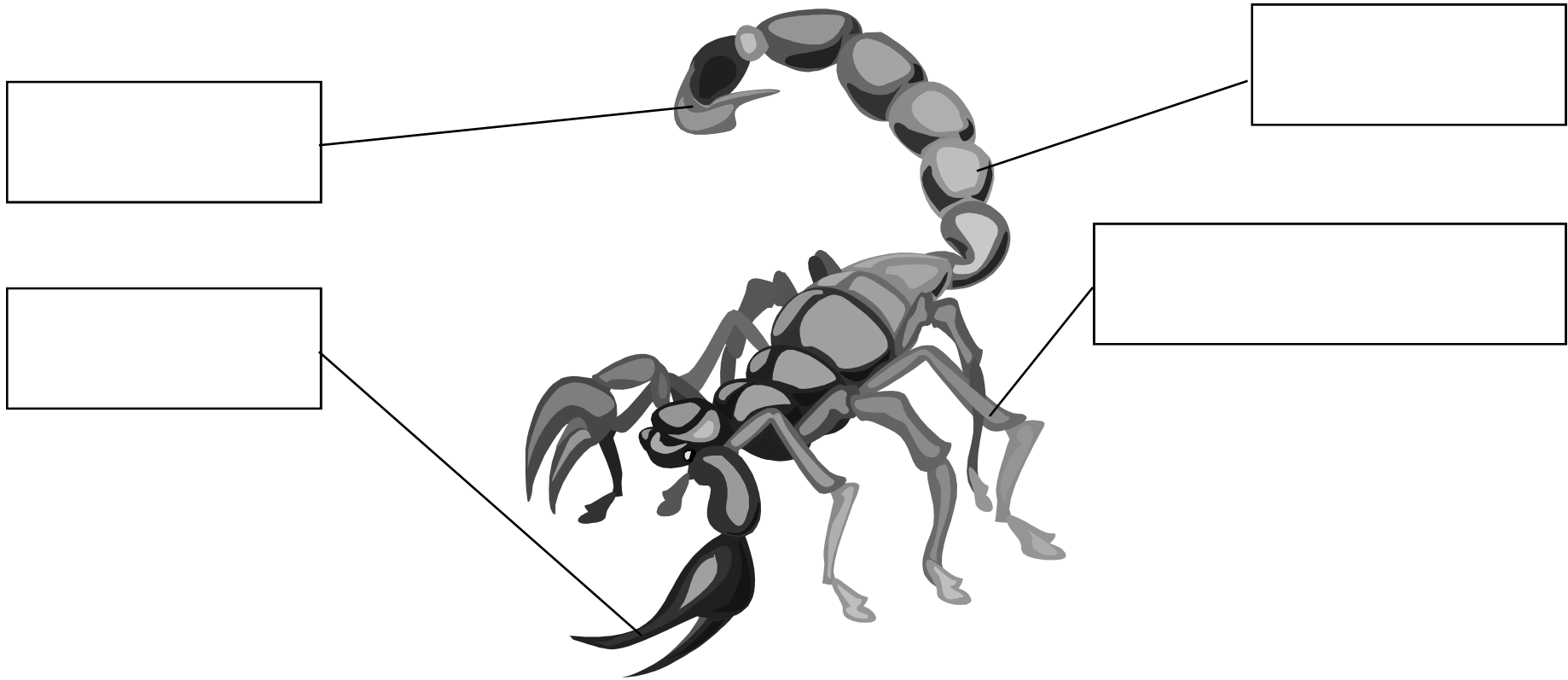
The praying mantis catches its prey with its front pair of legs, which have sharp edges to get a good grip. You cannot see the abdomen in this picture because it is covered with the wing cases (like the beetle)

sting

tail

pincers

ordinary leg



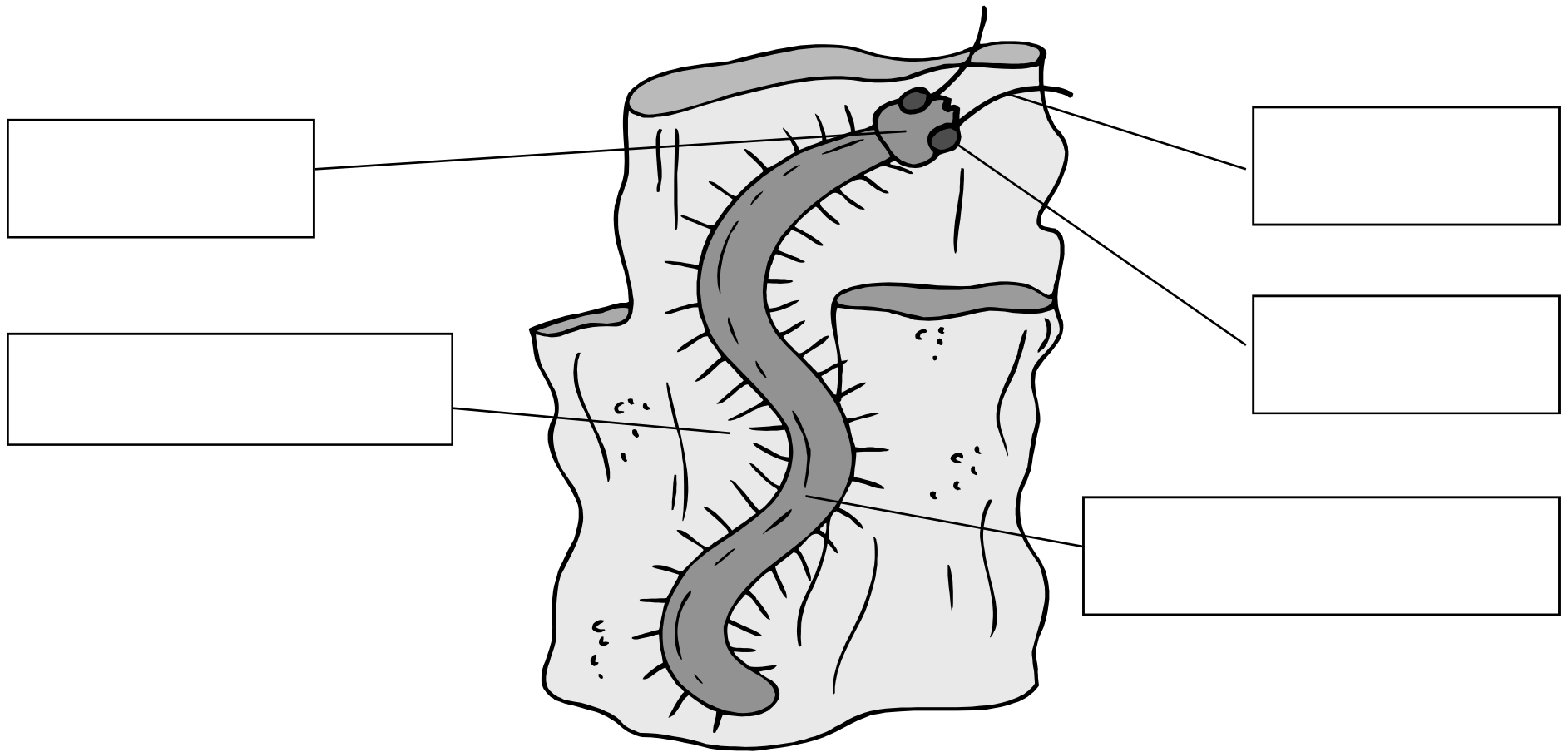
lots of legs

long body

antenna

head

eye



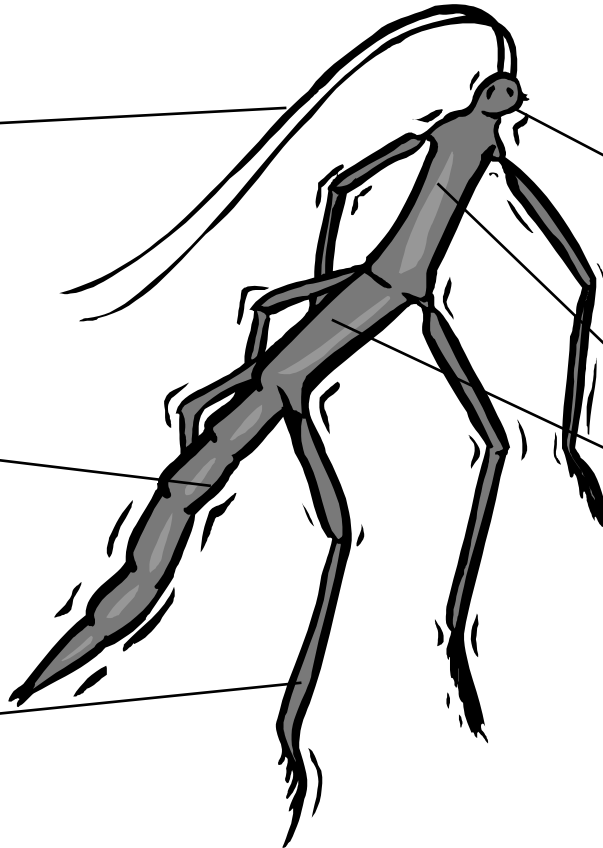
antenna

small head

long thorax

long abdomen

leg



head

thorax

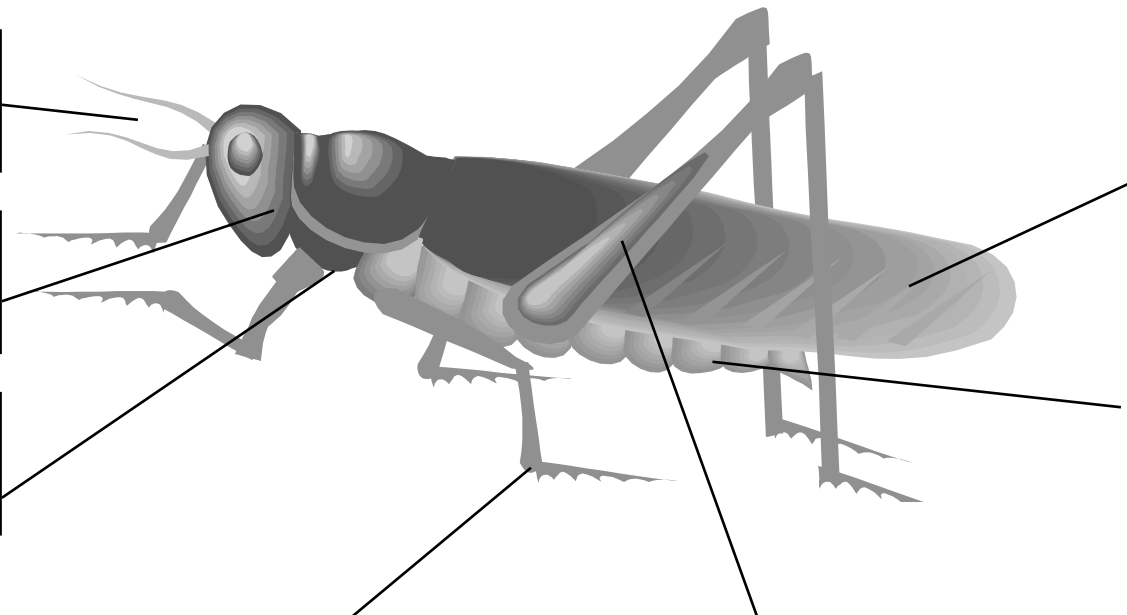
abdomen

antenna

wing case

short legs

long jumping leg

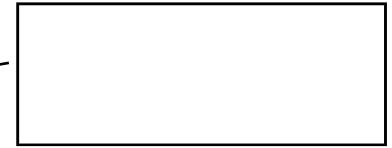
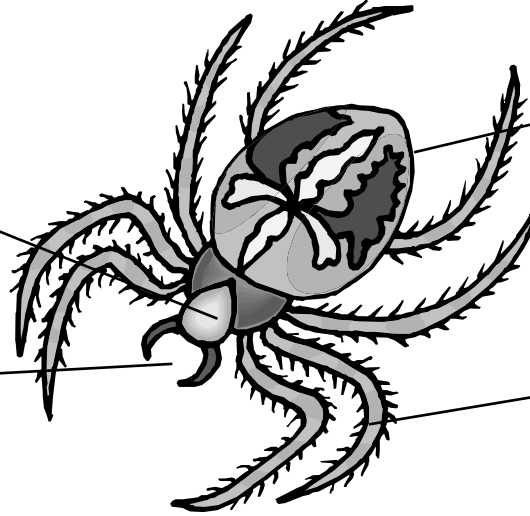
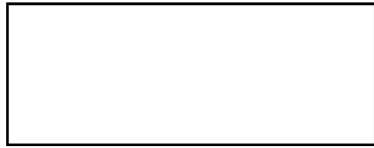


leg

head

jaws

body



tentacles

shell

body

foot

